

# 2005 F-150 F-250/F-350 SUPER DUTY ACCESSORIES

## Limited Warranty Information

Ford Motor Company will repair or replace any properly dealer-installed Genuine Ford Accessory found to be defective in factory-supplied materials or workmanship during the warranty period, as well as any component damaged by the defective accessory.

This means that Genuine Ford Accessories purchased along with your new vehicle are covered for the full length of your New Vehicle Limited Warranty — 3 years or 36,000 miles (whichever occurs first) should installation occur during this time. If you choose at a later date to purchase a Genuine Ford Accessory, it will be covered for 12 months or 12,000 miles (whichever occurs first). Contact your dealer for details and a copy of the warranty.

## Red Carpet Lease

Get the ride you want. Many Genuine Ford Accessories purchased and installed by the dealer at lease inception can be paid for in your monthly lease payment. See your Ford Dealer for details.

## ESP PremiumCare Plan

Depending on the ESP Plan you select, some dealer-installed Genuine Ford Accessories can be covered for up to 7 years or 100,000 miles. See your Ford Dealer for details.

NOTE: The product descriptions and specifications contained herein were correct at the time this material was being prepared for printing. However, our policy is one of continuous improvement, and we reserve the right to change design or specifications at any time without notice and without incurring obligation.



*PERSONALIZE YOUR F-150 AND F-250/F-350 SUPER DUTY WITH GENUINE FORD ACCESSORIES*



[fordaccessoriesstore.com](http://fordaccessoriesstore.com)

PRINTED IN U.S.A. ABT-4054 SEPTEMBER 2004



[fordaccessoriesstore.com](http://fordaccessoriesstore.com)





# 2005 F-150 F-250/F-350 SUPER DUTY

Pride and dependability come standard in the F-150 and F-250 / F-350 Super Duty. Rugged good looks, precise engineering, and one of the industry's strongest limited warranties. A standard for Genuine Ford Accessories.







**1. Low-Profile Wraparound Bug Shield**  
Protect the vehicle's front end from bugs, small stones and other debris. Durable smoke-colored acrylic complements any exterior color. Easy to install. Base Part No. 16C900

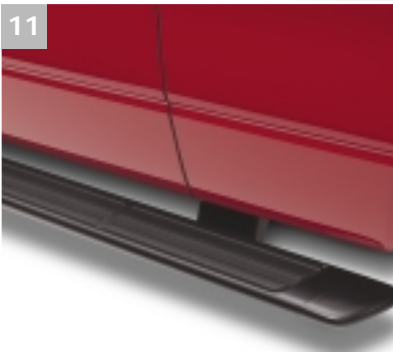
**2. High-Profile Wraparound Bug Shield**  
Protect the vehicle's front end from bugs, small stones and other debris. Smoke-colored to enhance any exterior color. Easy to install. Base Part No. 16C900

**3. Aero Grille Inserts**  
Constructed of durable plastic. Direct replacement for your factory grille. No drilling required. Aero design is available in select colors and primed (ready to paint). Upper and lower grilles available separately. F-150 only. Base Part No. 8200

**4. Billet Grille Inserts**  
Constructed of durable plastic. Direct replacement for your factory grille. No drilling required. Billet design is available in chrome and satin silver finishes. Upper and lower grilles available separately. F-150 only. Base Part No. 8200

**5. Chrome Bug Shield**  
Stylish chrome-finished bug shield protects the vehicle's front end from bugs, small stones and other debris. Easy installation. Base Part No. 16C900

**6. Side Window Deflectors**  
Deflectors keep out snow or rain so you can crack open the window and let fresh air in. Durable, smoke-colored acrylic. Self-stick adhesive for easy installation. Base Part No. 18246



**7. Full Front End Cover**  
Heavy-duty vinyl shields front end from bugs, stones and off-road debris. Flannel backing minimizes moisture buildup between the cover and the painted surface. Multi-piece construction lets you open hood without removing the cover. Base Part No. 19A414

**8. Lighted Running Boards\***  
These original equipment running boards feature lights at both ends to help make it easier to enter and exit from the cab. Lights activate when either a keyless entry fob is used or the vehicle's door is opened. Constructed of a corrosion-resistant, lightweight steel substructure with a durable black plastic cover. F-Super Duty only. Base Part No. 16450

**9. Custom Chrome Step Bars\***  
Corrosion-resistant, chrome-plated aluminum tubing is rugged yet lightweight. Wide, slip-resistant step pads are made of plastic to provide sure footing. Available in 4" and 5" tube diameter. Easy to install; no drilling is required. (5" step bar pictured.) Base Part No. 16450

**10. Custom Black Step Bars\***  
Corrosion-resistant, black-finished aluminum tubing is rugged yet lightweight. Wide, slip-resistant step pads are made of plastic to provide sure footing. Available in 4" and 5" tube diameter. Easy to install; no drilling is required. (4" step bar pictured.) Base Part No. 16450

**11. Original Equipment Step Bars\***  
A step up in style and durability. Corrosion-resistant steel substructure with a rugged step pad and a chip-resistant black finish. Easy no-drill installation. F-150 only. Base Part No. 16450

**12. Original Equipment Molded Running Boards\***  
Molded in black plastic. Easy no-drill installation. F-150 Super Cab and Crew Cab only. Base Part No. 16450

**13. Styled Molded Running Boards\***  
Step up with these e-coated steel substructure running boards with a rugged plastic cover. Wide, ribbed step pads help provide sure footing. Available in select exterior colors and primed (ready to paint). F-Super Duty only. Base Part No. 16450

**14. Stirrup Steps**  
Easy to install using existing holes. Heavy-duty, slip-resistant steps are offered in silver or black powdercoat finish. Front and rear sets of two are available to accommodate all cab configurations. F-Super Duty only. Base Part No. 20092

\*Eligible for residualization under a Ford Credit Red Carpet Lease.

# ENTICING EXTERIORS







15 16

**15. Bed Tailgate Liner\***  
Heavy-duty, black, ribbed, skid-resistant surface. No-drill installation.  
Base Part No. **000A38**  
Styleside and Flareside

**16. Bedliner\***  
Conforms to the contours of the vehicle bed. Features the Duraloc® cargo restraining system that allows the use of 2x4s to compartmentalize loads or create two-tiered stacking. Ribbed floor provides drainage and increased airflow between the bed and the liner to reduce mold, mildew and corrosion. Available in all bed sizes, in black with Ford Oval or Ford Racing logo for F-150, and Ford Oval logo for F-Super Duty. Includes tailgate liner.  
Base Part No. **00038** Styleside and Flareside F-150  
Base Part No. **00038** Styleside F-Super Duty



17

**17. Sport Liner™**  
Rugged as a bedliner, this carpeted liner will haul lumber, sand and more, yet still cushion your most delicate cargo. Marine-style polyester surface is bonded to foam and will not absorb stains, moisture, rot or mildew. Molded sidewalls conform to the contours of bed retaining features such as two-tier loading and tie downs. Easy to clean. Fits all bed sizes.  
Base Part No. **00038**



18

**18. Soft Tonneau Cover – With Snaps**  
Protect your vehicle's cargo area from the elements with this premium, heavy-duty, 20-oz. vinyl cover. The black aluminum rail system attaches securely and easily. Click-in-place rear rail offers easy access to cargo bed and features snaps made of a non-rusting composite material. Available in all bed sizes. No-drill installation.  
Base Part No. **501A42**



**19. Soft Tonneau Cover – Snapless**  
Specially designed frame attaches directly to the rails of the pickup bed. This allows access to the bed without the need for removing the cover. Constructed of a durable black vinyl. Available in long- and short-bed models.  
Base Part No. **501A42**



19



20

**20. Bed Mat**  
Custom-designed, heavy-duty rubber mat to protect your truck bed. Made of reinforced, synthetic rubber that resists cracking or breaking. Available in all bed sizes.  
Base Part No. **112A15**

**21. Boxtop - Hard Tonneau Cover\***  
This unique, hard fiberglass tonneau cover, manufactured by Leer™, dresses up your truck and helps protect its bed from the elements. Designed specifically for each vehicle, it can be locked to provide a secure trunk. Available in colors to match or complement your vehicle and primed (ready to paint).  
Base Part No. **501A42**



21



22

**22. Bed Extender Cargo Cage\***  
Sturdy stainless steel cage flips outward and extends over the tailgate to provide 18" of extra carrying space. When the cage is flipped inside the bed, it helps protect cargo from shifting. Easy to install and remove. Available for Styleside 5.5-ft. and 6.5-ft. beds.  
Base Part No. **286A40**

**23. Moonroof Deflector**  
Attractive smoke-colored deflector helps reduce wind noise while letting fresh air flow in. Installs easily. F-150 only.  
Base Part No. **500A26**



23



24



25

**24. Taillamp Surrounds**  
Add a custom look to any truck. Available in black, chrome-plated finish and primed. Easy to install with self-adhesive backing. F-Super Duty only.  
Base Part No. **13B564**

**25. Manual/Power Sliding Rear Windows\***  
Provide extra ventilation and comfort. Manual windows have privacy/solar-tinted glass to help reduce glare from the sun. One way tint is also available for F-Super Duty. Power windows open and close using a convenient dash-mounted switch.  
Base Part No. **422B30**



26

**26. Flat Splash Guards**  
Guard against mud, snow and ice. Durable splash guards are embossed with Ford logo. Packaged in a 2-piece set.  
Base Part No. **16A550**

**27. Molded Splash Guards**  
Deflect mud, snow and ice away from lower body panels. Contoured design complements vehicle lines and gives excellent protection. Heavy-duty black plastic construction resists cracking. Packaged in a 4-piece set for F-150 and 2-piece rear for Styleside. Packaged in pairs for front or rear for F-Super Duty. NOTE: Specify trim level.  
Base Part No. **16A550**



28

**28. Chrome Exhaust Tip**  
Slips over the end of the tailpipe. Constructed of heavy-duty, corrosion-resistant, chrome-plated stainless steel for long life. Easy to install; no drilling necessary.  
Base Part No. **5K238**

\*Eligible for residualization under a Ford Credit Red Carpet Lease.





29

### 29. Removable Trailer Tow Mirrors

If you only tow a trailer occasionally, then these removable trailer tow mirrors are just what you need. They slide easily over your existing mirrors to provide additional rear vision when pulling your trailer. F-150 only. Base Part No. **17696**



30

### 30. Telescoping Trailer Tow Mirrors – Manual and Power

Three styles available. *Manual* – When you're towing a load, the mirror telescopes out to help increase your range of vision. When not towing, the mirror slides in for normal range. Mirrors also include a forward-folding feature that helps minimize damage if one of them gets caught while the vehicle is backing out of a garage or other tight spot. *Power* – The same features as our manual mirrors, but the mirror glass features a power adjust. The telescoping feature is still manual. *Power/Heated* – Heated glass is added to minimize snow and ice buildup. NOTE: Power and *Power/Heated* mirrors are for vehicles equipped with power mirrors only. Not designed as an upgrade. F-Super Duty only. Base Part No. **17696**



31 32

## DIAMOND PLATE

### Diamond Plate

All Ford Diamond Plate accessories are constructed of heavy-gauge, Brite Tread aluminum with a clear powdercoat finish to help protect against corrosion and discoloration. All parts are designed to minimize the need for drilling during installation. In fact, most feature no-drill installations.

### 31. Diamond Plate Tool Boxes

Bright diamond plate in single- or double-lid design. Single lid opens from rear, double lid opens from either side. Both feature rubber matting, heavy-duty gas lift supports and locking paddle latches. F-Super Duty only. Base Part No. **17N004**

### 32. Diamond Plate Splash Guards

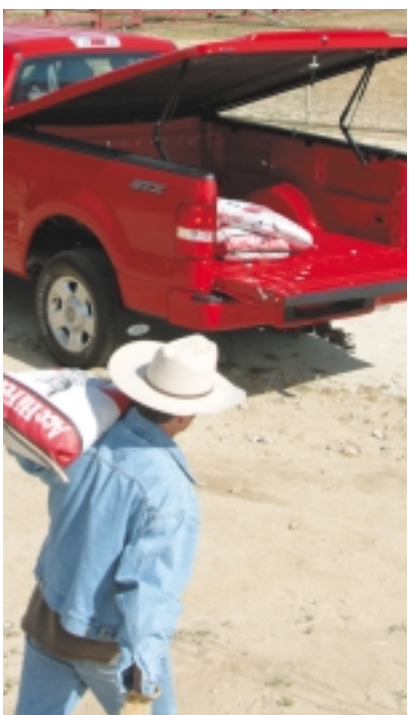
These oversize guards are functional and rugged. Easy to install, they're also available for dually applications. F-Super Duty only. Base Part No. **16A550**



33

### 33. Flat Rubber Splash Guards with Diamond Plate Insert

Extra-wide, heavy-duty guards available for F-Super Duty single and dual rear wheels, and front wheels. Base Part No. **16A550**



34 35

### 34. TracRac Adjustable Rack System

TracRac is an adjustable overhead rack system that allows you to expand cargo-carrying capacity. Base kit includes two triple-track base rails, two sliding overhead racks and four cross bar tie-downs. Extruded aluminum base rails mount to existing stake holes – no drilling required. System lets you slide or remove the overhead cross bars. Perfect for ladders, lumber or whatever the job demands. Constructed of anodized aluminum, TracRac is resistant to rust and corrosion. Specify long or short bed. F-Super Duty only. Base Part No. **9955200**



36

### 35. TracRac Cargo Area Divider

Help prevent items like building materials or large tools from sliding around in the bed. The Cargo Holder slides independently on inner tracks and can also be reconfigured (in seconds) as a rear window guard/headache rack – no tools required. F-Super Duty only. Base Part No. **9900092**



37

### 36. TracRac Toolbox Adapter

Now you can add an in-bed toolbox to the TracRac System. Lock the toolbox in the forward position for storage, or loosen the locks and slide the box to the rear of the bed for easy access. You can also slide the toolbox off the rack to maximize cargo capacity. Adapter includes hardware and instructions for easy installation. NOTE: Toolbox width in belly must not exceed 61.5" (156 cm). F-Super Duty only. Base Part No. **9928546**



38

### 37. TracRac Locking TracKnobs

Secure the TracRac or other accessories to the truck – simply replace the standard knobs with the TracKnobs, twist the key and the component is locked in place. Sold in pairs with keys. F-Super Duty only. Base Part No. **99000A25**

### 38. TracRac Basetrack Tie-Down

Sliding tie-downs provide a convenient place to attach a rope or bungee cord for securing cargo in the bed. Simply loosen the knob and slide the tie-down to the desired position. Sold in pairs. F-Super Duty only. Base Part No. **99000A64**



39



40

### 39. Bed Tent

No need to find a flat, dry campsite. This fully enclosed, water-resistant tent converts the pickup bed into comfortable sleeping quarters for two. Specially designed clips make installation easy. Four windows for full ventilation. Carrying bag included. Styleside 6.5-ft. and 8.0-ft. beds only. Base Part No. **99000C38**

### 40. BeddyJo Bike Carrier by Yakima™

Installs in minutes without tools. Sturdy steel construction with foam padding to help protect your vehicle's finish. Holds up to two bikes. Fully compatible with bedliners. Base Part No. **55100**

### 41. Trailer Hitch Receiver Cover

Provides a nice clean look, while preventing dirt, mud and snow from clogging the trailer hitch receiver. Available with Ford logo for 2" (5 cm) hitch assemblies. Base Part No. **17F000**

### 42. Trailer Hitch Assemblies

Original equipment hitch bolts directly on to existing holes – no drilling or welding required. NOTE: Towing capacity could be limited by vehicle powertrain. See your dealer or Owner's Guide for details. **F-150.** Class III hitch assembly includes a hitch and vehicle-specific brackets/fasteners. Base Part No. **19D520** **F-Super Duty.** Class III/IV hitch. Base Part No. **19D520**

### 43. Trailer Hitch Wiring Kit

This wiring harness assembly is made to plug into the factory wiring harness at the rear of your vehicle. The 7-pin design allows the use of trailers with electric brakes. The 4-pin design does not allow the use of trailers with electric brakes. Includes a bracket for convenient attachment. Dealer installation recommended. F-150 only. Base Part No. **13A576**

### 44. Trailer Hitch Balls

Chrome trailer hitch balls available in 1 7/8" (4.8 cm) or 2" (5 cm) diameters. Hitch balls feature forged, one-piece construction for maximum strength and a chrome finish for corrosion resistance. Designed with wrench flats to aid installation and removal. Refer to your Owner's Guide for towing limitations. Available for vehicles equipped with a trailer hitch. Base Part No. **19F503**



41



42



43

### 45. Trailer Hitch Drawbars

Designed for 2" receivers. Two offsets available: 0" drop, 2 1/2" rise; and 1 1/4" drop, 4" rise. Durable black powdercoat finish. Refer to your Owner's Guide for towing limitations. Base Part No. **19A282**



44



45





46

**Custom Wheels\***

Now available at your local Ford dealer! Designed specifically for your vehicle, this custom wheel meets Ford's rigorous appearance, durability and corrosion-resistance requirements. Base Part No. **1007**

**46. 4L3Z-1007-AAA; fits F-150**  
17" X 7.5" Bright machined aluminum with painted features, 5-spoke style. Includes chromed center cap with Ford logo (kit does not include lug nuts).

**47. 4L3Z-1007-KA; fits F-150**  
17" x 7.5" Chromed metal clad aluminum 5-spoke style. Includes chromed ring center cap with Ford logo (kit does not include lug nuts).

**48. 4L3Z-1007-JA; fits F-150**  
18" x 7.5" Bright machined aluminum 5-spoke, FX4-style. Includes machined center cap with Ford logo (kit does not include lug nuts).

**49. tbd-1007-tbd; fits F-150**  
18" x 7.5" Chromed aluminum 10 -spoke, Lariat-style. Includes chromed ring center cap with Ford logo (kit does not include lug nuts).

**50. Wheel Locks**  
For added protection against wheel theft, replace one lug on each wheel with one of these locks. Kit includes four locks and key. Base Part No. **1A043**

*\*Eligible for residualization under a Ford Credit Red Carpet Lease.*



47



48



49



50



# INSIDE AMENITIES



51

**51. Overhead Storage Bins**  
Some F-150s come factory-equipped with an Overhead Rail Storage System, which includes one large storage bin. The advanced design of these bins allows you to add another large or small bin by snapping it right into the Overhead Rail Storage System. Large (6 3/4" w x 6 1/2" h x 1 3/8" d); small (6 3/4" w x 4 3/4" h x 1 3/8"). No tools necessary! Available in colors to complement your vehicle. F-150 only. Base Part No. **519A70**

**Overhead Accessories**  
Choose from an assortment of convenient accessories that slide right into the large bin of the Overhead Rail Storage System – no tools necessary! (Large bin accommodates one accessory.)

**52. Black & Decker Dual Mini SnakeLights®**  
Base Part No. **13776**

**53. Black & Decker 75W DC to AC Inverter**  
Base Part No. **15052**

**54. First-Aid Kit**  
Base Part No. **19F515**

**55. Cell Phone/PDA Holder**  
Base Part No. **19A384**

**56. DVD/CD Case**  
Base Part No. **13562**

**57. Dual Sunglasses Holder**  
Base Part No. **11586**

**Overhead Rail Storage System Packages**  
Personalize your F-150 with one of three unique packages that simply snap in to the factory-installed Overhead Rail Storage System. Each features two large storage bins and a variety of other conveniences.

**Metro Package:**  
Includes a cell phone/PDA holder, DVD/CD case and dual sunglasses holder. Base Part No. **519A70**

**Freeway Package:**  
Includes a first-aid kit, Black & Decker SnakeLights® and DVD/CD case. Base Part No. **519A70**

**Interstate Package:**  
Includes a 75W inverter, cell phone/PDA holder and DVD/CD case. Base Part No. **519A70**



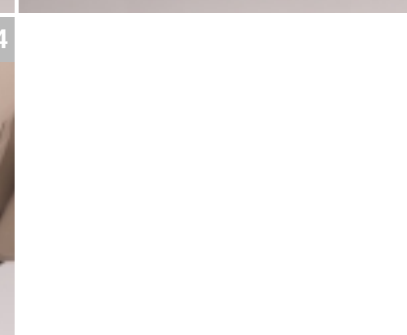
52



53



54



55



56



57





60

**58. Mobile-Ease™**

Leading-edge technology lets you dial, send and receive calls through your Bluetooth™ wireless phone – hands-free, through simple voice commands. Integrates with vehicle's audio system and mutes radio as you send/receive calls. Automatically links with a compatible Bluetooth hands-free wireless phone as you enter vehicle. Visit the [bluetooth.letstalk.com](http://bluetooth.letstalk.com) website for available Bluetooth phones. Base Part No. **19G399**

**59. Rear Seat Cargo Organizer**

Made of premium-grade polyethylene with molded dividers that help separate belongings. Easy under-seat installation and removal. Available on Super Cab F-Super Duty; Regular Cab, Super Cab and Super Crew (all without subwoofer) for F-150. Base Part No. **115A00**

**60. Electrochromic Mirrors and Electrochromic HomeLink® Mirrors**

Ease the discomfort of headlight glare in your rearview mirror. Automatically dims when glare is detected. Electrochromic Mirrors are available with built-in compass only or with the added feature of a temperature display. New Electrochromic HomeLink Mirrors have a wireless control feature that allows you to activate home lighting, open garage doors, disarm security systems, and communicate with any radio-frequency-controlled home device from your vehicle. They are also available with compass only or with compass/temperature display. Dealer installation recommended. Base Part No. **17700**

**61. Hands-Free Cell Phone Prep Harness**

(not pictured) Hands-Free Cell Phone Prep Harness is an easy, plug-and-play way to integrate hands-free cell phone car kits to your vehicle. It provides the interface between your vehicle's audio system and most hands-free car kits. Harness connects to vehicle's radio and supplies the necessary wiring to attach most hands-free car kits available in the aftermarket. See your dealer for details. Base Part No. **19A393**



58



59

**62. DVD Rear Seat Entertainment System\***

Road trips won't seem so long when the kids are happily occupied! Compact, all-in-one, overhead DVD unit features a flip-down 7," 16:9, LCD screen that folds neatly into headliner when not in use. Comes with remote control and two wireless headphones. System also plays CDs, MP3s, CDRs and CDRWs. Has RCA inputs for video games, VCR or camcorder. Can also work through vehicle's stereo speakers and/or headphones. Unit snaps to overhead rail. Available for vehicles without moonroof. F-150 only. Requires factory-installed DVD Electrical Prep Package. Base Part No. **19G323**

**63. Speed Control**

Microcomputer-controlled system automatically adjusts the throttle to maintain your desired cruising speed. Fingertip controls are conveniently located on the steering wheel. Kit contains a black urethane steering wheel. Dealer installation required. Base Part No. **9A818**

**64. All-Weather Vinyl Floor Mats**

The deep grooves and raised ridges in these heavy-duty mats catch and hold snow, slush and mud, while protecting the vehicle carpeting. Nibbed backing and driver-side positive retention help keep mats in place. Front and rear mats sold separately. Front mats feature F-150 logo and F-Super Duty logo. In colors that complement your vehicle interior. Base Part No. **13086** Front Base Part No. **13106** Rear

**65. Carpeted Floor Mats**

Premium-grade carpeting is custom fit to the exact contour of each vehicle. Driver-side mats have positive retention, and all mats have a nib backing to help prevent slippage. Front and rear mats sold separately. Front mats feature F-150 logo and F-Super Duty logo. Base Part No. **13086** Front Base Part No. **13106** Rear



62



62



63



65



64



*\*Eligible for residualization under a Ford Credit Red Carpet Lease.*





66

**66. Remote Start Systems\***  
Enjoy the comfort and convenience of a pre-warmed or pre-cooled vehicle. Systems start vehicle from up to 500 ft. (150 m) away, and ensure that it's locked and that its security system (if equipped) is armed. Comes with two remote transmitters. Two systems to choose from: Remote Start only; and Remote Start with Vehicle Security. Dealer installation recommended. Base Part No. **19G364**

**67. Daytime Running Lamp Module**  
This system automatically activates the low-beams at 75% of their normal operating voltage whenever the ignition is in the "on" position. Dealer installation recommended. Base Part No. **13B218**

**68. Daytime Running Lamp with Auto Headlamp Module**  
Daytime running lights will activate during daylight. Engineered for complete integration with vehicle electrical system. Available on vehicles equipped with Auto Headlamp Module. Dealer installation recommended. Base Part No. **13B218**

**69. Keyless Entry Remote Keypad**  
Conveniently unlock your vehicle without your key or keyless entry remote. No wiring necessary – programmable, backlit keypad tunes to the same frequency as your transmitter. Long-life battery (lasts 100,000 cycles). Easy no-drill installation. For vehicles equipped with factory remote keyless entry. Base Part No. **14A626**



67 68



69

**70. Remote Keyless Entry\***  
If your vehicle is equipped with power door locks, the remote keyless entry will let you lock and unlock the doors from up to 50 ft. (15 m) away. System features remote illuminated entry, which turns on the dome light, and a one-button personal protection panic feature that activates the vehicle's horn. Includes two hand-held remotes. Dealer installation recommended. F-Super Duty only. Base Part No. **220K51**



70

**71. Vehicle Security Systems\***  
Protect your vehicle with a state-of-the-art security system. These systems offer a full range of security features and come complete with pocket-sized transmitters. Three systems to choose from: Vehicle Security only; Deluxe Vehicle Security; and Vehicle Security with Remote Start. Includes a Lifetime Limited Warranty on parts (contact dealer for complete details). Dealer installation recommended. NOTE: Vehicles equipped with a security system may be eligible for insurance discounts in some states/provinces. Base Part No. **19A361**



71

**72. Locking Gas Cap**  
To prevent loss, a plastic tether attaches cap to the vehicle. Swing-away cover helps keep moisture and debris out of locking mechanism. Includes two keys. F-Super Duty only. Base Part No. **9030**



72



73



74



**73. Wheel Locks**  
For added protection against wheel theft, replace one lug on each wheel with one of these locks. Kit includes four locks and key. Base Part No. **1A043**

**74. Highway Safety Kit**  
Convenient carrying kit includes a first-aid kit, a reflective triangle, a flashlight, bungee cords, a thermal blanket, cotton gloves, hose tape, a multifunction knife, Phillips and slotted head screwdrivers, a 12-hour light stick, jumper cables and pliers. Base Part No. **19F515**

**75. First-Aid Kit**  
Compact case fits into glove compartment or center console so it's always there when you need it! Contains general first-aid items such as bandages, gauze, antibacterial ointment and more. Base Part No. **19F515**

**76. Full Vehicle Cover**  
Constructed of multi-layer, non-woven, breathable material, NOAH® covers resist rain, snow, acid rain and bird droppings, and protect your vehicle's finish from UV rays and door dings. Features double-stitched overlapped seams, elastic sewn into the front and rear hems to help hold cover in place, and non-scratch grommets that can be used with a tie-down rope (included) or a cable and lock (not included). Cover features vehicle logo on front and a license plate view window in rear. Base Part No. **19A412**



75



76

PEACE OF MIND

\*Eligible for residualization under a Ford Credit Red Carpet Lease.